

UNICANCER



R&D UNICANCER

Oncology Research

R&D UNICANCER

A national academic sponsor dedicated to clinical research in oncology

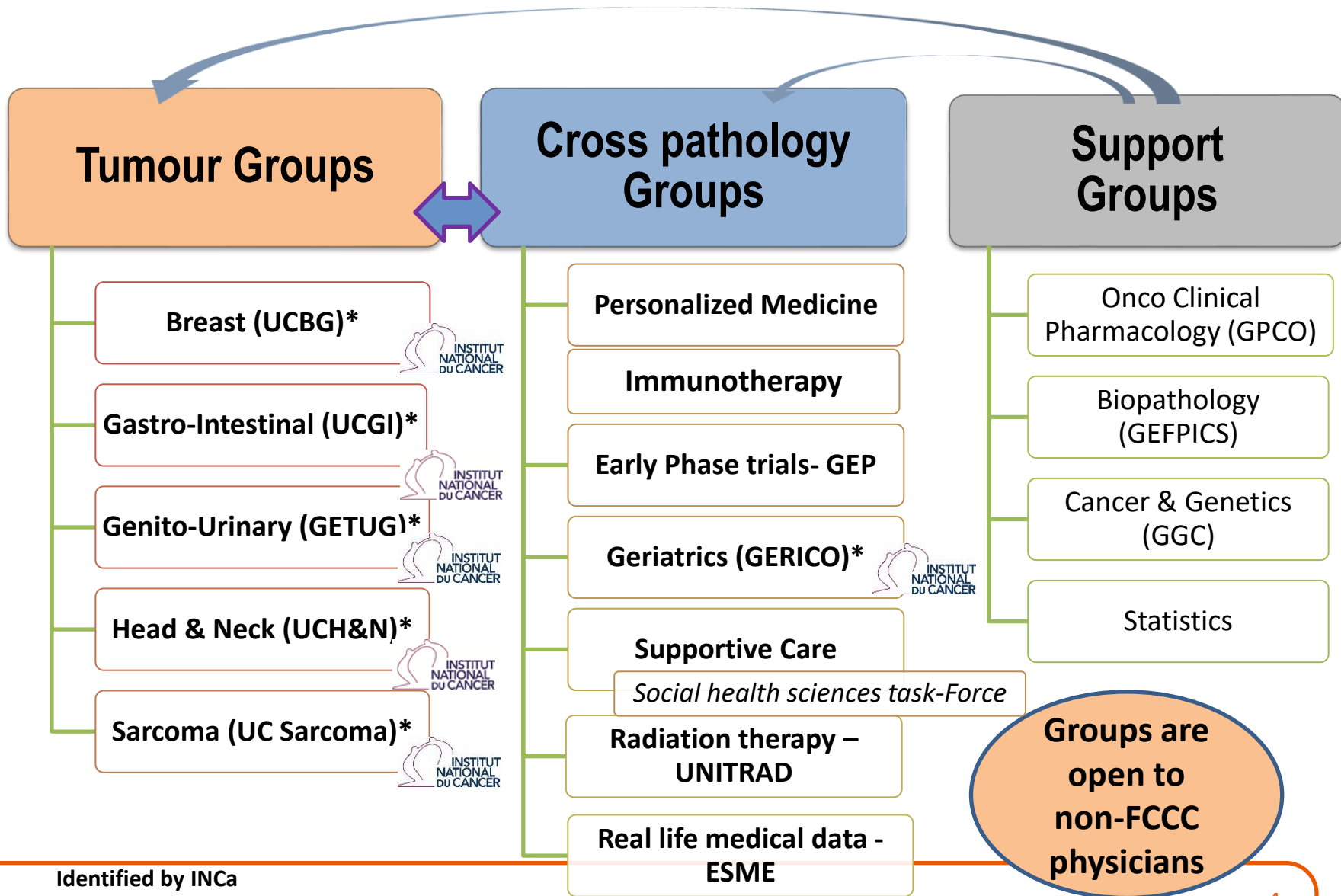
Our missions:

- Promote and accelerate **Clinical Research** in Oncology, especially in areas insufficiently covered by pharma
- Facilitate patient access to **Innovation** for a **better care**
- Encourage **Translational Research** and increase **cancer knowledge**

R&D UNICANCER

- More than **150 people** fully dedicated to clinical trials and real life data operations and management
- Tumor bank with **25,000** new samples per year (Lyon)
- Centralized **Data Center –C-DISC SDTM**, INCa-certified and **FDA compliant** (Montpellier)
- **French liaison** office for **EORTC** (European Organization for Research and Treatment of Cancer)

The UNICANCER Groups, a large network of experts



Identified by INCa
as the key scientific groups for the
specific oncology domain

*ESME: EpidemioStrategy Medical Economics

R&D UNICANCER: Funding model

Charities

2 main partnerships with charities exclusively dedicated to cancer



Private companies

Partnerships with pharmaceutical, biotech and medical device companies

**R&D UNICANCER
Funding**

National Public funding

Via INCa and PHRC (Hospital Clinical Research Program) call for projects



Academic funding

International cooperative groups partnerships/programs

R&D UNICANCER: Strategic orientations (1)

■ Covering unmet needs

- Rare cancers
- Orphan populations
- Surgery, Radiotherapy



■ Evaluation of diagnostic or therapeutic strategies to improve patients survival and QoL

■ Evaluating the interest and efficacy of biology driven medicine

- Promoting large programs of molecular screening
- Developing proof of concept programs
- Improving knowledge on disease and treatments
- Offering patients early access to new therapies ⁶

R&D UNICANCER: Strategic orientations (2)



■ Promoting Immunotherapy Research

- Offering early access to rare / orphan cancers (**Acsé**)
- Understanding the mechanisms of treatment toxicities and resistance (**Check'Up**)

■ Generating Real Life Data Programs

- **Retrospective real life database** : the **E.S.M.E*** program
⇒ 1st project in 2014 in metastatic breast cancer
- **Prospective cohorts** with biological material collection
⇒ e.g. **CANTO** : long term toxicities of cancer treatment (non metastatic breast cancer)

UNICANCER

R&D

* *Epidemiological-Strategy-and-Medical-Economics*

R&D UNICANCER

2017 key figures



13

New trials
=> 1 H2020

86

clinical trials in
progress, incl 44 in
active phase

150

highly-qualified
dedicated
employees

30 000

Patients in the ESME
program

216

Investigator sites
involved in France
and abroad

≈ 5000

patients enrolled
each year

UNICANCER

R&D

R&D Unicancer national partners

200

Public and private hospitals

70

Academic institutions

e.g. Inserm
CNRS

Charities



Cooperative groups

e.g. IFCT,
FFCD,
GERCOR,
GSF-GETO,
SFCE

Scientific societies

e.g. SFC,
AFSSOS, AFU,
FFCD

ANSM
INCa,
HAS

Health agencies

Biotech and
Pharmaceutical
companies

UNICANCER

R&D

R&D Unicancer **International** partners



European Coop Groups

BIG, GBG, NCRI groups
Cancer research UK
EORTC groups
SAKK...

Liaison Office

EORTC

North American Coop Groups

NCI network , NCIC
NCCTG/MCCRC
SWOG

- Reg. clinical trials, R&D Unicancer can act as :
- Sponsor
 - Delegate sponsor
 - Partner (liaison)





R&D Unicancer **Flagship** Programs

- Acse
- Phase III international trials (PEACE1, IROCAS)
- Genomic trials (SAFIR02)
- Cohorts (Canto, EXPRESS, Check up)
- ESME



Accès des patients à l'innovation

2013

AcSé thérapies ciblées

Accès sécurisé à des thérapies innovantes pour des patients avec une tumeur porteuse d'une anomalie génomique cible de la molécule.

Essais de phase II "basket"

- > 180 sites ouverts
- > 300 patients inclus

UNICANCER

R&D



Programme AcSé 2013-2017

Figure 1: Hépatocarcinome à virus hépatite B: plateformes génétiques

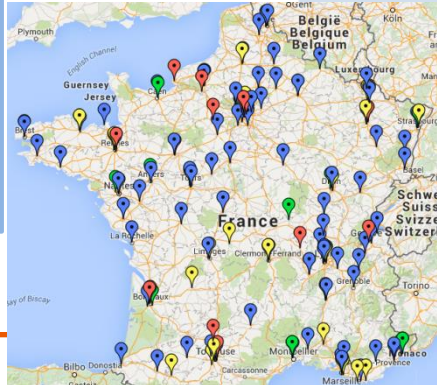


1

Diagnostic moléculaire

2

Essai clinique phase II



AcSé crizotinib

ALK, MET, RON, ROS1

10,000 – 18,000 patients
14,000 – 25,000 tests

28 INCa
Plateformes de génétique moléculaire

PI : G. Vassal
autorisations – mai 2013
1^{er} patient – août 2013

16 cohortes, 463 patients
3 ans d'inclusion
Durée totale de l'essai 3-6 ans

Promoteur

Jusqu'à 250 centres investigateurs

AcSé vemurafenib

BRAF V600

28 INCa
Plateformes de génétique moléculaire

PI : JY Blay
autorisations – juillet 2014
1^{er} patient – octobre 2014

11 cohortes, 300 patients
3 ans d'inclusion
Durée totale de l'essai 3-6 ans

Promoteur

Jusqu'à 250 centres investigateurs





Accès des patients à l'innovation – Pathologies rares

2017



AcSé
immunothérapie
 Secured Access to anti-PD-1.

Essais de phase II
“basket”
Cancers rares

UNICANCER

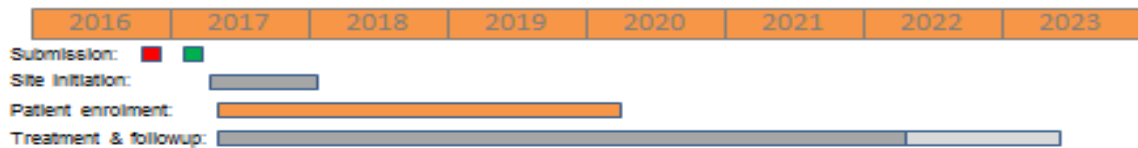
Coordonnateur :
 Pr JC Soria

R&D

LA LIQUE

CONTRE LE CANCER

AcSé Nivolumab		AcSé Pembrolizumab	
250 patients		300 patients	
5 cohorts (20-50 pts / cohort):		6 cohorts (20-50 pts / cohort):	
• Non-clear RCC	B. ESCUDIER	• Rare sarcomas	J.Y. BLAY
• Rare head and neck cancer	F. JANOT	• Rare ovarian cancers	I. RAY COQUARD
• Rare skin cancer	L. MORTIER	• PCNSL	K. HOANG-XUAN
• Cancers with MSI (except CRC)	C. TOURNIGAND	• Rare thyroid cancers	M. SCHLUMBERGER
• Penile cancer	D. POUESSEL	• Rare malignant neuro-endocrine cancers	P. NICCOLI
		• Germ-cell-cancers	C. MASSARD



Event	Date
ANSM & EC submission	AcSé Nivolumab: 15 Dec 2016 AcSé Pembrolizumab: 21 Dec 2016
ANSM & EC approval	Feb/Mar 2017
First SIV	Mar 2017
FPI	Mar 2017
First interim analysis	Q4 2017 / Q1 2018
LPI	Mar 2020
LPLV	2023

2014

ESMÉ

Real life databases describing patient treatment and its socioeconomical impact at large scale**..

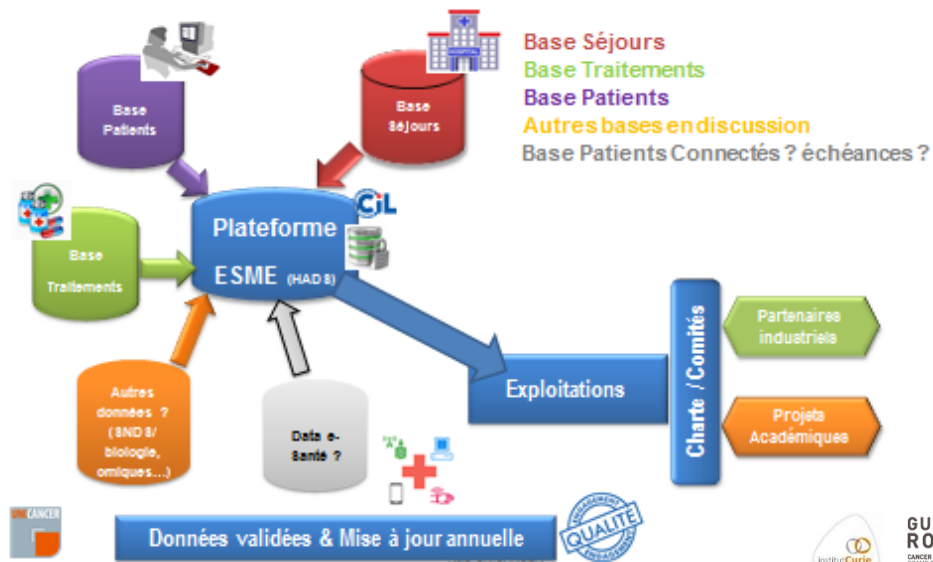
Data available for scientific reports, French Health authorities, industrial partners...

2014: MBC -> 20 000 pts

2016 : ovarian cancers -> 5 000 pts

2017: lung cancers-> 16 000 pts

ESME Program



Patients

Partenaires ESME

Roche, Pierre Fabre, MSD, Pfizer, AstraZeneca, Eisai

Map of France showing regional cancer centers and research institutions: Institut Curie, GUSTAVE ROUSSY, Centre François Baclesse, Centre Eugène Marquis, Institut de Cancérologie de l'Ouest, Institut Bergonié, Institut Universitaire du Cancer de Toulouse, Institut Paoli-Calmettes, Centre Léon Berard, Centre Georges François Leclerc, Centre Antoine-Lacaigne, Institut Jean Perrin.



Ongoing data platform and next steps (Sep-2018)

- ❑ ESME MBC : 23,000 cases (female /male) / 27,000 expected
- ❑ ESME OC: 6,800 female cases, 14,000 expected
- ❑ ESME Poumon CLCC et hors CLCC : 12.000 cases (female /male) / 30,000 expected
- ❑ Next ESME data platforms : metastatic Kidney Cancer, Colorectal cancer, Prostate,...)
- ❑ Other activities in progress :
 - ❑ Involvement of other health centers (outside the FCCC network)
 - ❑ Partnership with the French NCI (INCa) : data modeling for generalisability of ESME results at national level
 - ❑ Access to primary care data /Other practices (institutional partnership to match with SNDS data)
 - ❑ Oncology RWD used as historical arm for phase II/III trials
 - ❑ Artificial intelligence, linkage with existing Data Warehouse, international academic cooperation...

Automate « data abstraction » in all health centers for patients diagnosed with cancer
Populate data from other sources (biology, e-Health, ...)



Original Research

Time trends of overall survival among metastatic breast cancer patients in the real-life ESME cohort

Elisa Gobbini ^a, Monia Ezzalfani ^b, Véronique Dieras ^c, Thomas Bachelot ^d, Etienne Brain ^c, Marc Debled ^e, William Jacot ^f, Marie Ange Mouret-Reynier ^g, Anthony Goncalves ^h, Florence Dalenc ⁱ, Anne Patsouris ^j, Jean Marc Ferrero ^k, Christelle Levy ^l, Veronique Lorgis ^m, Laurence Vanlemmens ⁿ, Claudia Lefeuvre-Plesse ^o, Simone Mathoulin-Pelissier ^p, Thierry Petit ^q, Lionel Uwer ^r, Christelle Jouannaud ^s, Marianne Leheurteur ^t, Magali Lacroix-Triki ^u, Audrey Lardy Cleaud ^b, Mathieu Robain ^v, Coralie Courtinard ^v, Christian Cailliot ^v, David Perol ^b, Suzette Delaloge ^{a,*}

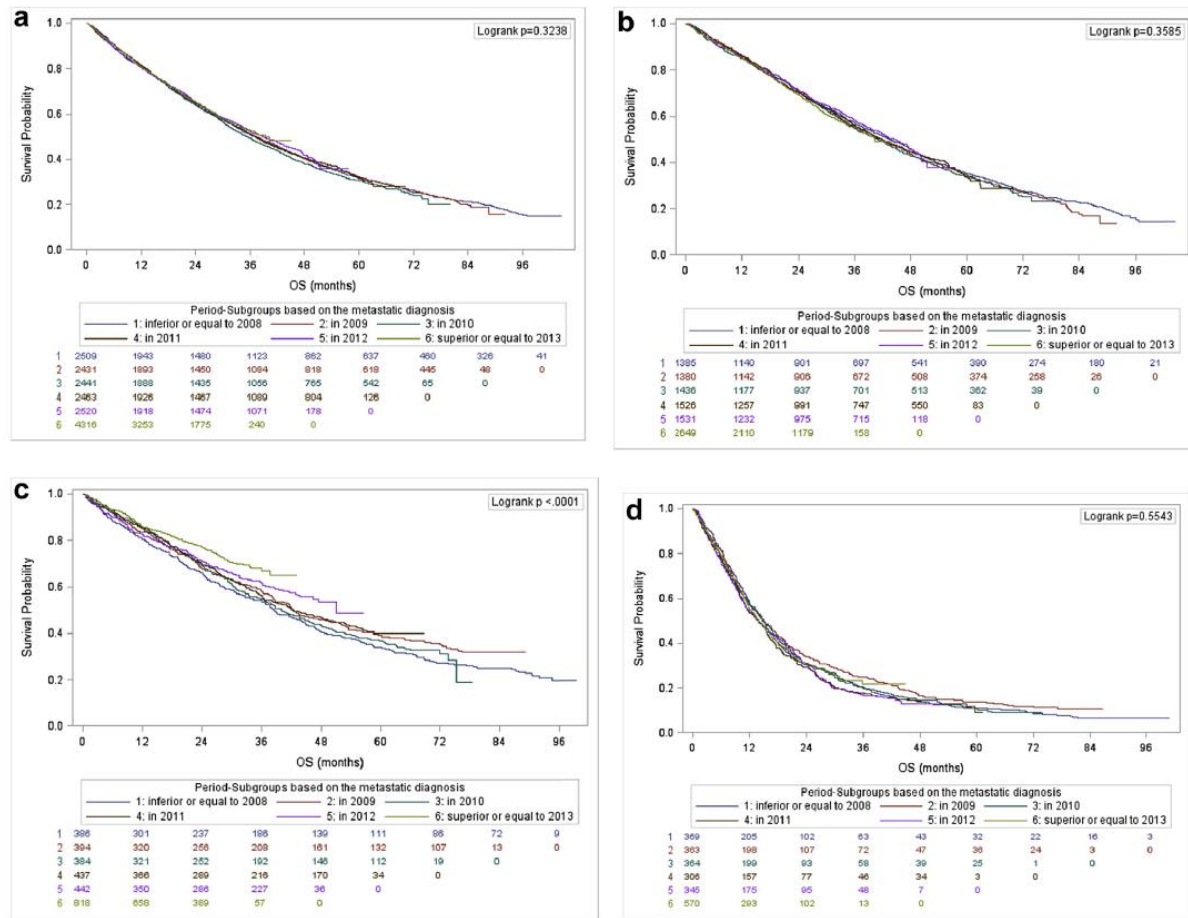


Fig. 2. Overall survival in the whole cohort of patients and in each subcohort by year of metastatic diagnosis. a. Overall survival of the whole cohort by year of diagnosis. b. Overall survival in the HR+ HER2- MBC subcohort by year of diagnosis. c. Overall survival in the HER2+ MBC subcohort by year of diagnosis. d. Overall survival in the HR- HER2- MBC subcohort by year of diagnosis. HR, hormone receptor; MBC, metastatic breast cancer; OS, overall survival.

- ▣ ESME MBC : 23,000 cases (female /male) / 27,000 expected
- ▣ ESME OC: 6,800 female cases, 14,000 expected
- ▣ ESME Poumon CLCC et hors CLCC : 12.000 cases (female /male) / 30,000 expected
- ▣ Next ESME data platforms : metastatic Kidney Cancer, Colorectal cancer, Prostate,...)
- ▣ Other activities in progress :
 - ▣ Involvement of other health centers (outside the FCCC network)
 - ▣ Partnership with the French NCI (INCa) : data modeling for generalisability of ESME results at national level
 - ▣ Access to primary care data /Other practices (institutional partnership to match with SNDS data)
 - ▣ Oncology RWD used as historical arm for phase II/III trials
 - ▣ Artificial intelligence, linkage with existing Data Warehouse, international academic cooperation...

Automate « data abstraction » in all health centers for patients diagnosed with cancer

Populate data from other sources (biology, e-Health, ...)

NETSARC, RREPS and CONTICABASE



NetSarc-ResOs

Réseaux de référence Cliniques

Sarcomes - GIST - Desmoides - Tumeurs osseuses rares



L'ANSM suspend les essais masitinib promus par AB Science. Le GSF-GETO recommande imatinib ou sunitinib en remplacement.

Home Account request Reset password Help & Infos Education Tools

Login

Welcome to NetSarc-ResOs

NetSarc is the French clinical reference network for soft tissue and visceral sarcomas, implemented in 2010 and approved by the INCa in 2014 (28 centers). NetSarc's RCP list.

ResOs is the French reference network for bone sarcoma and rare bone tumours, implemented in 2013 (14 centers). ResOs's RCP list.

This site gathers clinical data from patients discussed on sarcoma multidisciplinary committees (RCP) in NetSarc-ResOs centres.

These 2 networks work jointly with the French sarcoma pathological reference network (RRePS) which insures a second expert pathological review of every suspected cases.

The very structure of these networks and the automatic study of each case of sarcoma in specialized RCP improve and homogenize the management of patients with sarcomas in France, especially by making access to clinical protocols and to innovative therapeutics for all patients easier.



Content overview

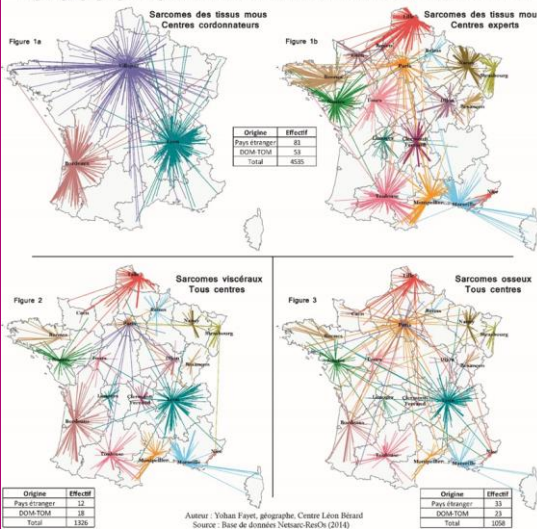
- Patients : 49477
- Primary tumours : 49737
- RCPs : 116384
- Trial inclusions : 3225

Last change on 27/09/2018 17:17:00 by pervieux.

Copyright © 2018

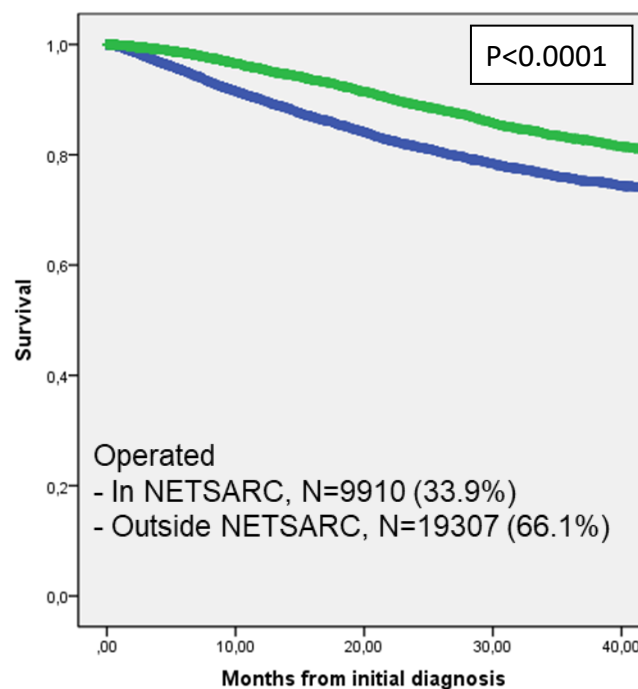
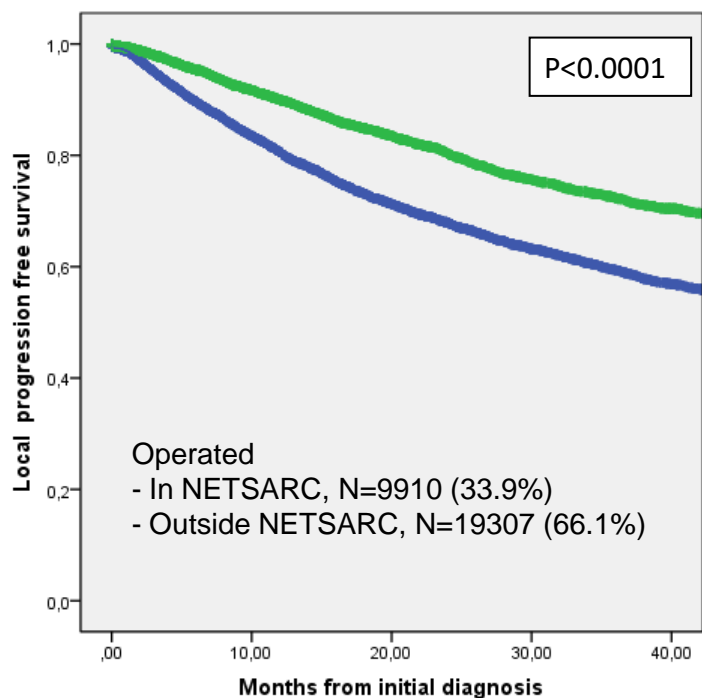
Version : 4.0.1

Origine géographique des patients discutés en RCP Sarcome dans les centres du réseau Netsarc

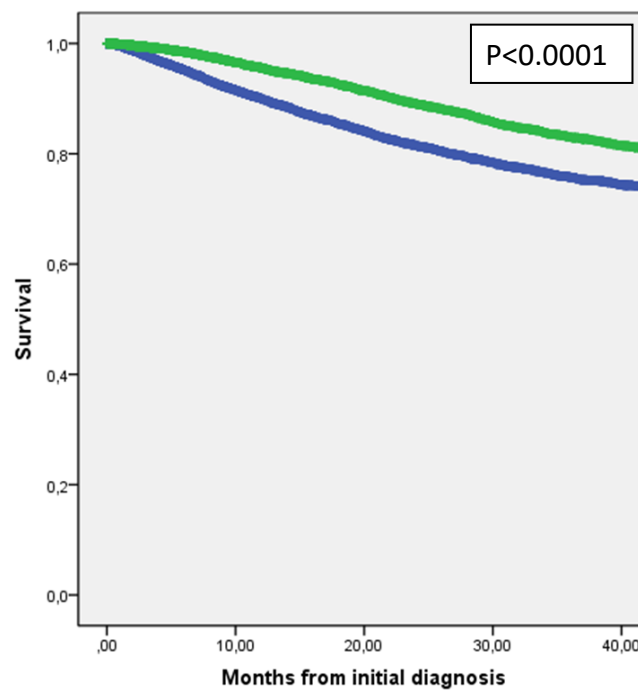
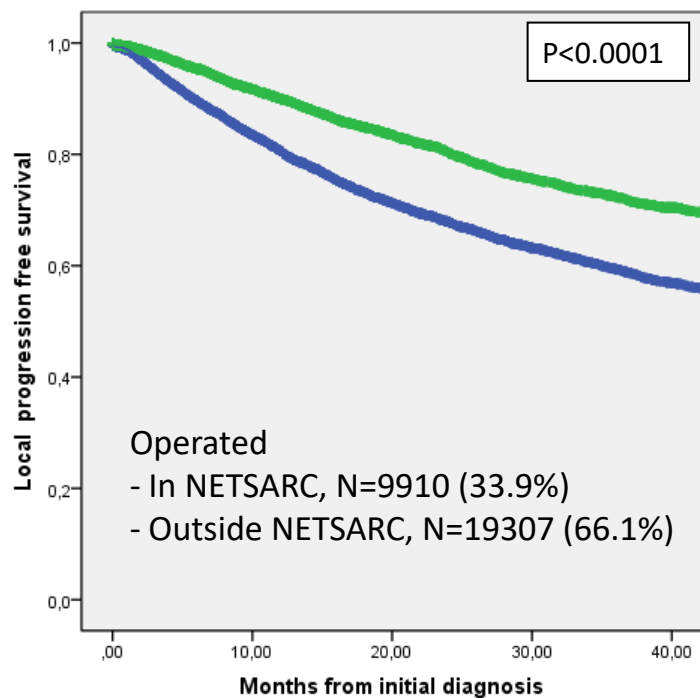


LRFS & OS : incident sarcoma patient population in France since 01/01/2010

N=29217 patients with sarcomas



LRFS & OS : incident patient population



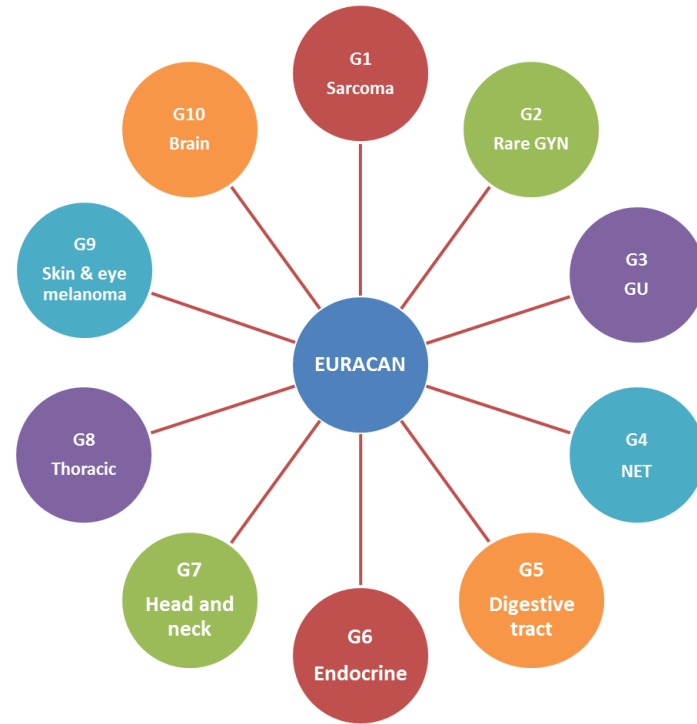


European Reference Network

for rare or low prevalence complex diseases

Network
Adult Cancers
(ERN EURACAN)

EURACAN



RARE SOLID ADULT CANCERS

UNICANCER



R&D UNICANCER

Oncology Research