

OECD WORKING GROUP HIGHLIGHTS



OECD





Mission Statement

Create a European (molecular) pathology based platforms environments to improve knowledge transfer and multi-center translational cancer research to be used by the OEI Comprehensive Cancer Centers to reach a high standard of care for all European Cancer Patients.

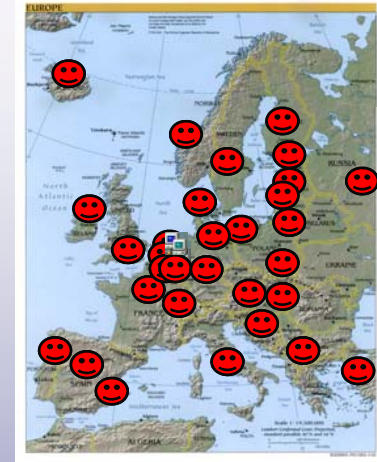
Key Goals

- Improving OEI TuBaFrost
- OEI Histopathology Forum
- OEI Pathobiology meetings



TuBaFrost

- Not many users yet
- Good platform to exchange samples
- Many plan to use it
- Unfamiliar with the software



Adapt software



Improving OEI TuBaFrost Website and Application

TuBaFrost now needs upload of sample data

Alternative:

- Questionnaire about the collection
- Fills searchable database

Requestor

- Searches suitable biobanks
- Asks research question
- Defines the samples and quantity



- Frozen / Blood / Cell lines / Xenografts / TMA's
- Closed project environments
- Open access environment
- Questionnaire for biobank for easy data upload
- Sample data upload for the advanced biobanks



Welcome to the Tubafrost Central Database

[Institutes](#) [Users](#) [ICDO3 Topography](#) [ICDO3 Histology](#) [Tissue requests](#)
[Your profile](#) [Your tissues](#) [Search tissues](#) [Your orders](#) [Your basket](#)

[Log off](#)
[Change admin](#)

Thursday, 15 May 2008 - 17:04:20
 Logged in: Dr. Peter Riegman (Erasmus Medical Center) - Admin

Your tissues

Ordered by: Tissue code - [Your institute's tissues](#) - [Add tissue](#) - [Add tissue for patient with code:](#) - [Batch tissue upload](#) - [Export your tissues](#)

△ Tissue code ▾	△ Patient code ▾	△ Topography ▾	△ Condition ▾	△ Diagnosis 1 ▾	△ Stage ▾	△ Grade ▾	△ Age ▾	△ Sex ▾	△ Availability ▾	Collector	Times issued	Status	Images	
EMC-E226-19	E226-19, E226-21 Add tissue	ESOPHAGUS	non-tumor	Adenocarcinoma, NOS			66	M	available	Dr. Peter Riegman (Erasmus Medical Center) (p.riegman@erasmusmc.nl)	0	Entered: 27 Feb 2006 Updated: 28 Feb 2006	0	Edit - Delete
EMC-E226-20	E226-19, E226-21	ESOPHAGUS	non-tumor	Adenocarcinoma, NOS			66	M	available	Dr. Peter Riegman (Erasmus Medical Center)	0	Entered: 27 Feb 2006	0	Edit - Delete

[EMC-E226-21](#)

[EMC-E226-46](#)

[EMC-E226-47](#)

[EMC-E226-48](#)

[EMC-E230-24](#)

[EMC-E230-25](#)

[EMC-E230-26](#)

[EMC-E230-48](#)

[EMC-E230-49](#)

Done



[Your profile](#) [Your basket](#) [Your orders](#) [Requests](#)
[Your tissues](#) [Your bloods](#) [Your cell-lines/Xeno's](#) [Prospective collection](#)
[Search tissues](#) [Search bloods](#) [Search cell-lines/Xeno's](#) [Search experiments](#)

Sunday, 14 October 2007 - 15:22:52
 Logged in: Dr. Peter Riegman (Erasmus Medical Center) - Admin

[Log off](#)
[Appl. management](#)

Tissue search results

Ordered by: Tissue code - [Back to search criteria](#)

△ Tissue code ▾	△ Patient code ▾	△ Topography ▾	△ Condition ▾	△ Diagnosis 1 ▾	△ Stage ▾	△ Grade ▾	△ Age ▾	△ Sex ▾	△ Availability ▾	Collector	Times issued	Status	Images	
LUMC-L0024	pc-0041	BONES AND JOINTS	tumor	Chordoma, NOS			57	M	issued/in use	Prof Pancras Hogendoorn (LUMC) (p.c.w.hogendoorn@lumc.nl)	0	Entered: 22 Aug 2007 Updated: 22 Aug 2007	0	Edit - Delete - Add to basket
LUMC-L0035	pc-0049	BONES AND JOINTS	tumor	Giant cell tumor of bone, malignant		2	34	F	issued/in use	Prof Pancras Hogendoorn (LUMC) (p.c.w.hogendoorn@lumc.nl)	0	Entered: 23 Aug 2007 Updated: 23 Aug 2007	0	Edit - Delete - Add to basket
LUMC-L0041	pc-0009	BONES AND JOINTS	tumor	Dedifferentiated chondrosarcoma		3	37	F	issued/in use	Prof Pancras Hogendoorn (LUMC) (p.c.w.hogendoorn@lumc.nl)	0	Entered: 23 Aug 2007 Updated: 23 Aug 2007	0	Edit - Delete - Add to basket
LUMC-L0042	pc-0054	BONES AND JOINTS	tumor	Giant cell tumor of bone, malignant		2	30	F	issued/in use	Prof Pancras Hogendoorn (LUMC) (p.c.w.hogendoorn@lumc.nl)	0	Entered: 23 Aug 2007 Updated: 23 Aug 2007	0	Edit - Delete - Add to basket
LUMC-L0048	pc-0058	BONES AND JOINTS	tumor	Giant cell tumor of bone, malignant			52	M	issued/in use	Prof Pancras Hogendoorn (LUMC) (p.c.w.hogendoorn@lumc.nl)	0	Entered: 23 Aug 2007 Updated: 23 Aug 2007	0	Edit - Delete - Add to basket
LUMC-L0051	pc-0061	BONES AND JOINTS	tumor	Giant cell tumor of bone, malignant		4	46	M	issued/in use	Prof Pancras Hogendoorn (LUMC)	0	Entered: 23 Aug 2007	0	Edit - Delete - Add to basket



Meetings (Pathology, Mol Path and biobanking)

- Strong need
- Once every year
- Need for histology web site for sharing

**Workshop: "OECE Pathobiology Romania Cluj"
Open the OECE histo pathology forum**



Workshop: "OECE Pathobiology Romania Cluj"

- What can we do to reach the OECE mission statement?
- What do we need?
- Strategy for European Projects to answer the needs?

Presentations by workshop participants
Key note speakers
Discussions



OECE

Workshop “European Tissue Banking for Medical Research”


55 Participants
19 different countries

Enthusiastic reactions
more than positive evaluation

Overall evaluation 8.5

More OECE TuBaFrost registrations





OECI

ORGANIZATION OF EUROPEAN CANCER INSTITUTES

Welcome **Riegman!**
You logged in as an Administrator!

Virtual Histopathology Forum

Menu

Cardial myxoma with.....

Posted by: Riegman on: December 23, 2006, 10:46 am

[Post a reply](#) [Edit case](#)

Home

Open Cases

Closed Cases

Search


Admin Panel

Logout

Submit a case

About us

A 60-year-old woman was found to have mass in the left atrium discovered after work-up for a stroke. The mass was removed and was found to be attached to the inter-atrial septum. The pathologist received a gelatinous and partly hemorrhagic partly beige colored tumour of about 3 cm.



Three H&E stained slide shows a mixed fibro-collagenic and partly myxoid stroma with hemorrhagic areas with iron pigment deposits, and with typical "Gamna-Gandy" bodies. In addition, strands of cells and glandular structures are seen formed by cubical to cylindrical cells. The later showed atypia and proliferative activity, which is unusual.

This tumour must be seen as:
A cardiac myxoma with:

- A)Glandular atypia
(Where do the epthilial cells originate from?)
- B)Adenocarcinoma
- C)Metastasis of an adenocarcinoma of other origin

[Post a reply](#)

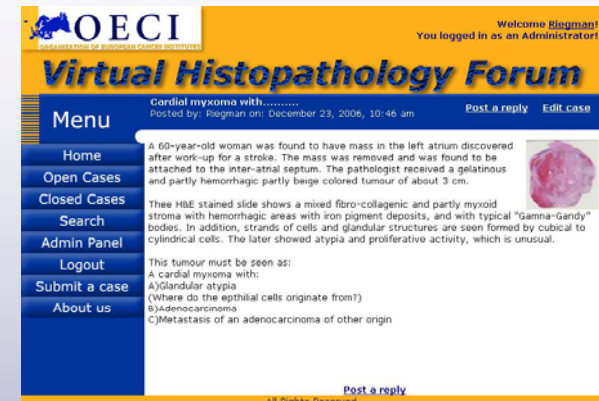
All Rights Reserved



Histopathology Forum

- Difficult cases
- Interesting cases
- Innovative procedures

Closed cases form a reference repository to support pathology education



NDP.serve - H07-7313 2B - 2007-05-07 15.53.54 - Microsoft Internet Explorer

File Edit View Favorites Tools Help

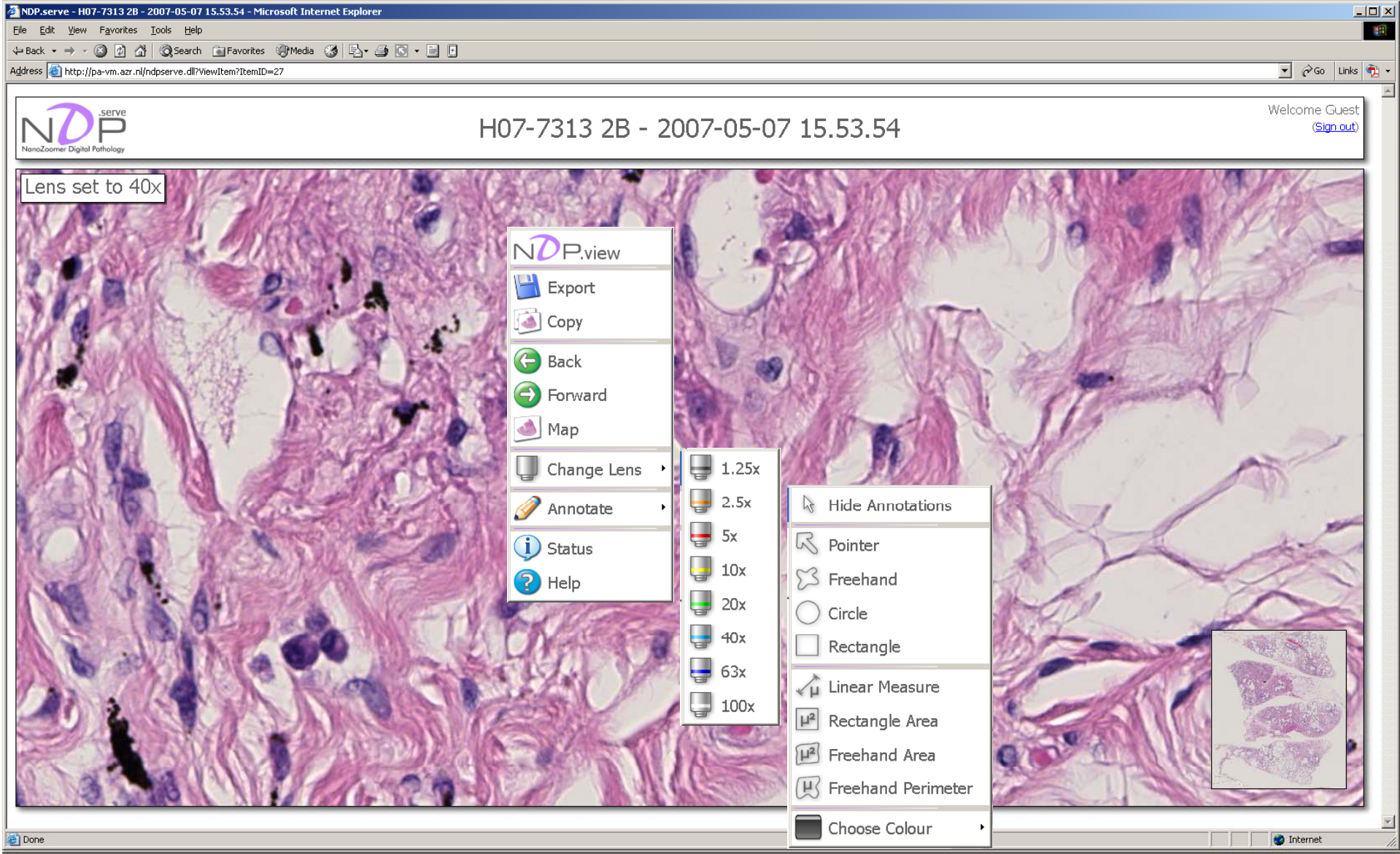
Address http://pa-vm.azr.nl/ndpserve.dll?ViewItem?ItemID=27

NDP.serve NanoZoomer Digital Pathology

H07-7313 2B - 2007-05-07 15.53.54

Welcome Guest (Sign out)

Lens set to 40x



NDP.view

- Export
- Copy
- Back
- Forward
- Map
- Change Lens
 - 1.25x
 - 2.5x
 - 5x
 - 10x
 - 20x
 - 40x
 - 63x
 - 100x
- Annotate
 - Hide Annotations
 - Pointer
 - Freehand
 - Circle
 - Rectangle
 - Linear Measure
 - Rectangle Area
 - Freehand Area
 - Freehand Perimeter
 - Choose Colour
- Status
- Help

Done Internet



ONGOING ACTIVITY

- **Workshop: “OECE Pathobiology in Romania Cluj”**
- **Improving TuBaFrost website and application**
- **Opening OECE Histopathology forum**
- **OECE TuBaFrost involvement in BBMRI, ISBER**



European biobanking and Biomolecular resources preparatory phase

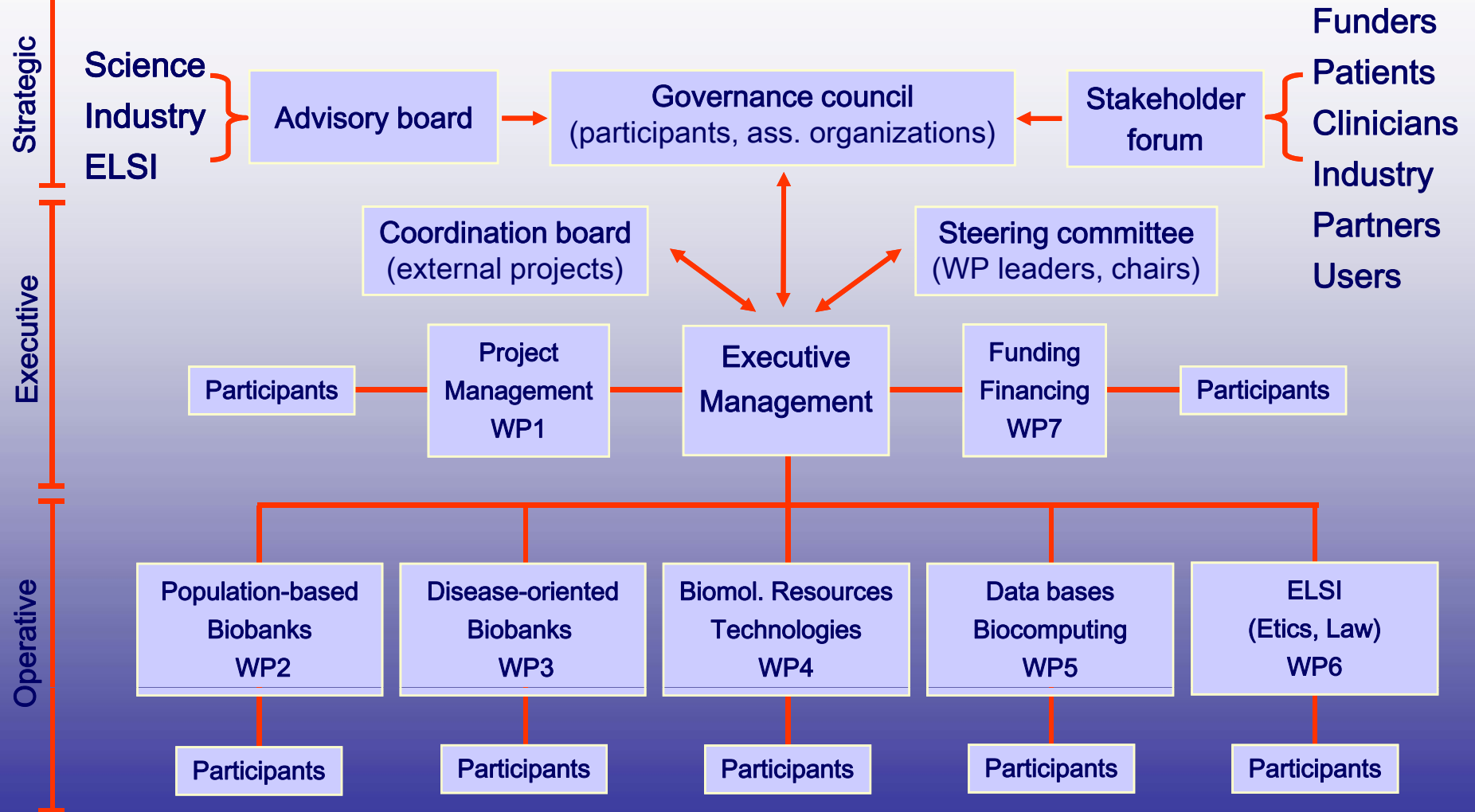
- DNA Biobanking/Population Biobanking WP 2
- Disease Oriented Biobanking WP 3

Population biobanking

- Longitudinal population-based cohorts
- Clinical case/control studies = Disease oriented
- Population isolate studies
- Twin registries



BBMRI Organization (prep phase) Pan-European Biobanking and Biomolecular Resources Research Infrastructure





D3.1: Inventory on existing clinical biobanks (mo 6)

D3.2: Web-based overview catalogue (mo 18)

D3.3: Review of technical solutions and quality criteria (mo 6)

D3.4: Electronic manual of existing documents for biobanking methods (mo 18)

D3.5: System of incentives for providers of biological samples (mo 12)

D3.6: Concept of a pilot network of biobank infrastructures (mo 21)

D3.7: Concept for national hubs of clinical biobanks (mo 15)

D3.8: Rules of involvement of scientific community/rules for access, review of applications, competing interest (mo 6)

D3.10 Clinical biobanking in the field of cancer research (mo 6)

D3.11 Education and training – European master biosampling techniques (mo 6)



President - elect



- The Forum for International biobanking
- Vast majority of members involved medical biobanking
- Annual meetings, Working groups, Listserv, Regional chapters, Vendors, Best practices, Self accreditation, Education and training
- Uniting with: P3G, BBMRI, Marble Arch, NCI, OECE TuBaFrost

Pathobiology WORKING GROUP

